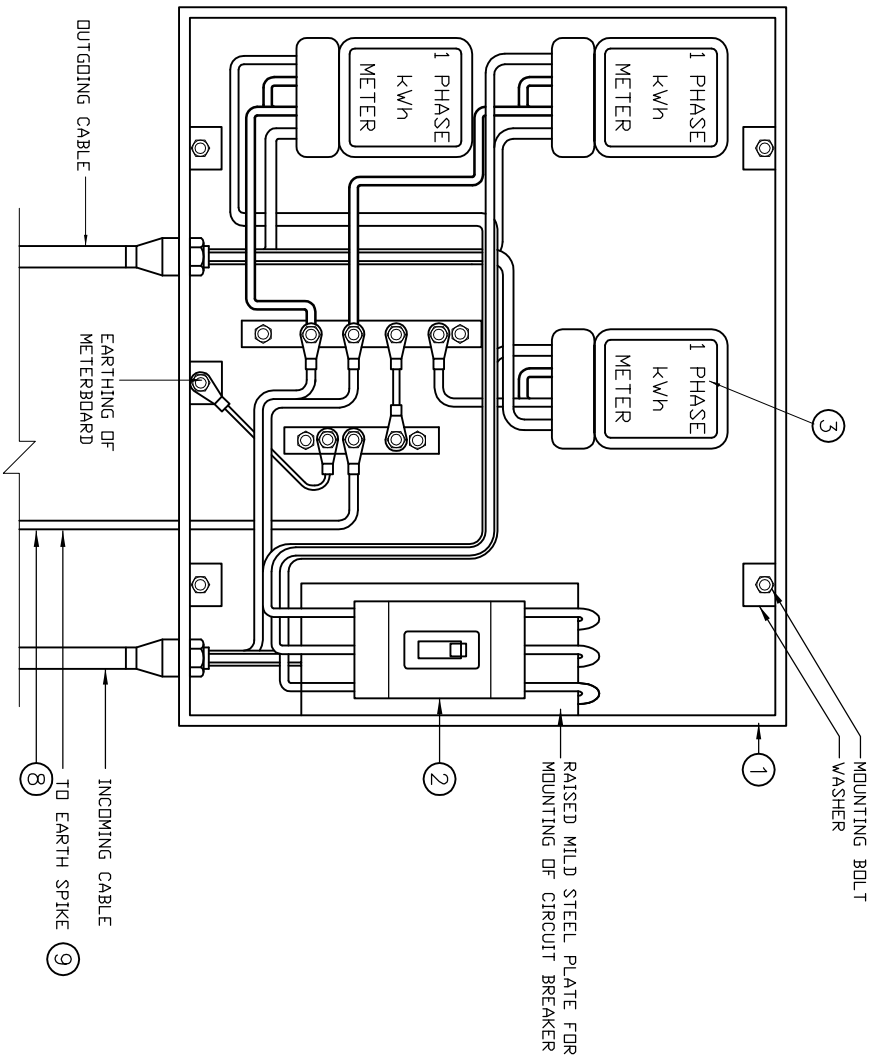


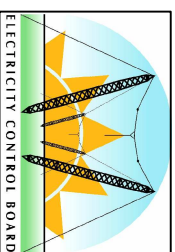
COPYRIGHT © 2000 EMCON  
 ALL RIGHTS RESERVED. NO PART OF THIS PUBLICATION MAY BE REPRODUCED STORED IN A RETRIEVAL SYSTEM OR TRANSMITTED IN ANY FORM OR BY ANY MEANS, ELECTRONIC, MECHANICAL, PHOTOCOPYING, RECORDING OR OTHERWISE, WITHOUT THE PERMISSION IN WRITING FROM EMCON.



ITEM	DESCRIPTION	QTY	REMARKS
1	WATERBOARD	1	MAX. DEMAND OEM TYPE
2	TRIPLE POLE MCB	1	SIZE AS REQUIRED C/W SHOULD
3	kWh METER	1	VECTRON TYPE C/UP - 3 PHASE
4	PBC INSULATED CONDUCTORS	-	SIZE AS REQUIRED
5	NEUTRAL BUSBAR (COPPER)	1	225x25x6mm C/W INSUL. MOUNT.
6	EARTH BUSBAR (COPPER)	1	225x25x6mm C/W INSUL. MOUNT.
7	TERMINATION LUGS	-	SIZE & QUANTITY AS REQUIRED
8	EARTH CONDUCTOR	17m	25mm <sup>2</sup> BARE COPPER
9	EARTH SPIKE	1	1.2m LONG 16mm <sup>6</sup> (NOT SHOWN)
10	LABELS ON COVER	-	WORDING AS REQUIRED

- NOTES:
- FOR MOUNTING DETAILS REFER TO DRAWING STD-LVABC-24.
  - METERBOARD TO INCLUDE RAISED PLATE, COVER AND HINGED DOOR. COVER IS NOT SHOWN HERE.
  - THE RATING OF THE LARGE FRAME CIRCUIT BREAKER SHALL BE AS INSTRUCTED (HEINEMANN LV603 OR JSO).
  - CONDUCTOR SIZES USED IN METERBOARD SHALL COMPLY WITH SABS 0142.
  - THE CURRENT TRANSFORMERS (CT'S) TO BE INSTALLED SHALL BE AS INSTRUCTED.
  - THE CR RATIOS SHALL BE INDICATED ON THE METER ON A LABEL.
  - ALL BUSBARS SHALL BE SOLID COPPER INSTALLED ONTO INSULATORS.
  - ARRANGEMENT SHOWN ONLY FOR UP TO 70 mm CONDUCTORS/CABLES.

### ELECTRICITY CONTROL BOARD



Box 2923  
 Windhoek  
 NAMIBIA  
 Tel: (061) 374300  
 Fax: (061) 374305

DRAWING TITLE  
**LOW VOLTAGE AERIAL BUNDLED  
 CONDUCTOR DISTRIBUTION:  
 METERBOARD LAYOUT:  
 THREE PHASE CONSUMER ( 60A )**

DESIGNED: A.K	DRAWN: J.W.S	REV: 01-2001
DRAWING No: STD-LVABC-36		SCALE: N.T.S



ERROR: syntaxerror  
OFFENDING COMMAND: --nostringval--

STACK:

/Title  
( )  
/Subject  
(D:20100127100314+02'00')  
/ModDate  
( )  
/Keywords  
(PDFCreator Version 0.9.5)  
/Creator  
(D:20100127100314+02'00')  
/CreationDate  
(johnny)  
/Author  
-mark-