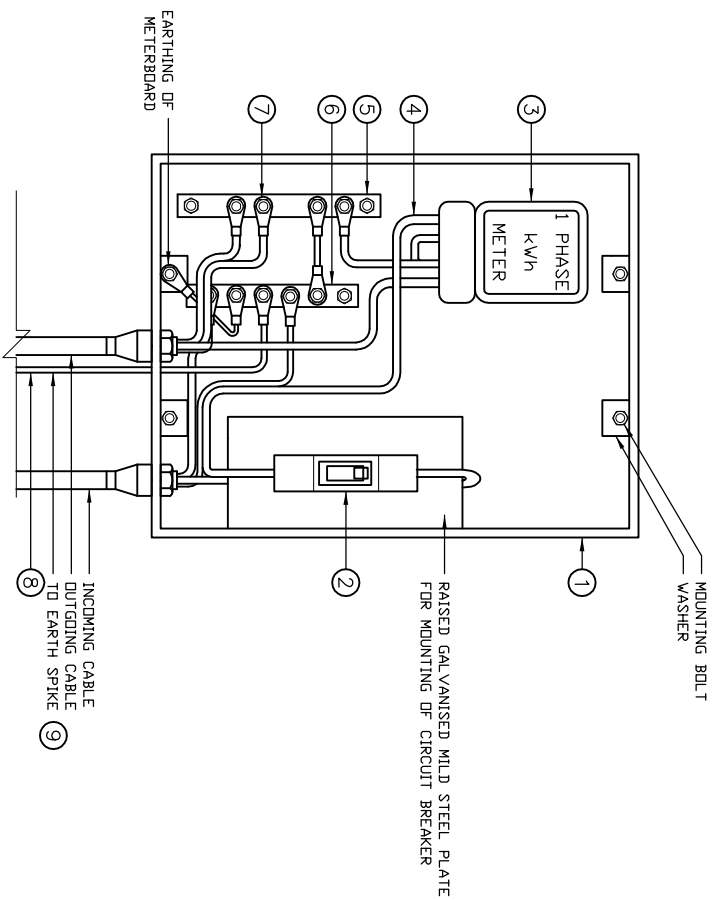


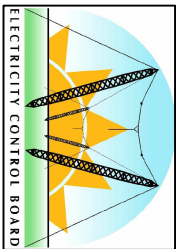
COPYRIGHT © 2000 EMCON  
 ALL RIGHTS RESERVED. NO PART OF THIS PUBLICATION MAY BE REPRODUCED STORED IN A RETRIEVAL SYSTEM OR TRANSMITTED IN ANY FORM OR BY ANY MEANS, ELECTRONIC, MECHANICAL, PHOTOCOPYING, RECORDING OR OTHERWISE, WITHOUT THE PERMISSION IN WRITING FROM EMCON.



ITEM	DESCRIPTION	QTY	REMARKS
1	METERBOARD	1	SIZE AS REQUIRED C/W SHROUD
2	SINGLE POLE CIRCUIT BREAKER	1	CULLINAN SCHUMBERGER TYPE
3	SINGLE PHASE kWh METER	1	SIZE AS REQUIRED
4	PVC INSULATED CONDUCTOR	-	225x25x6mm C/W INSUL. MOUNT.
5	NEUTRAL BUSBAR (COPPER)	1	225x25x6mm C/W INSUL. MOUNT.
6	EARTH BUSBAR (COPPER)	1	225x25x6mm C/W INSUL. MOUNT.
7	TERMINATION LUGS	-	SIZE & QUANTITY AS REQUIRED
8	EARTH CONDUCTOR	6m	25mm <sup>2</sup> BARE COPPER
9	EARTH SPIKE	1	1.2m LONG, 16mm (NOT SHOWN)
10	LABELS ON COVER	-	WORDING AS REQUIRED

- NOTES:
- FOR MOUNTING DETAILS REFER TO DWG NO. STD-LVABC-24.
  - METERBOARD TO INCLUDE RAISED PLATE, COVER AND HINGED LID. COVER IS NOT SHOWN HERE.
  - THE RATING OF MINIATURE CIRCUIT BREAKER (MCB) SHALL BE AS INSTRUCTED. (HEINEMANN SF1-C3)
  - THE CONDUCTOR SIZES USED IN THE METERBOARD SHALL COMPLY WITH SABS 0142.
  - ALL BUSBARS SHALL BE SOLID COPPER INSTALLED ONTO INSULATORS.

ELECTRICITY CONTROL BOARD



Box 2923  
 Windhoek  
 NAMIBIA  
 Tel: (061) 374300  
 Fax: (061) 374305

LOW VOLTAGE DISTRIBUTION:  
 METERBOARD LAYOUT:  
 SINGLE PHASE CONSUMER

DESIGNED: A.K	DRAWN: J.W.S	REV: 01-2001
DRAWING No: STD-LVABC-23		SCALE: N.T.S



ERROR: syntaxerror  
OFFENDING COMMAND: --nostringval--

STACK:

/Title  
( )  
/Subject  
(D:20100127103750+02'00')  
/ModDate  
( )  
/Keywords  
(PDFCreator Version 0.9.5)  
/Creator  
(D:20100127103750+02'00')  
/CreationDate  
(johnny)  
/Author  
-mark-