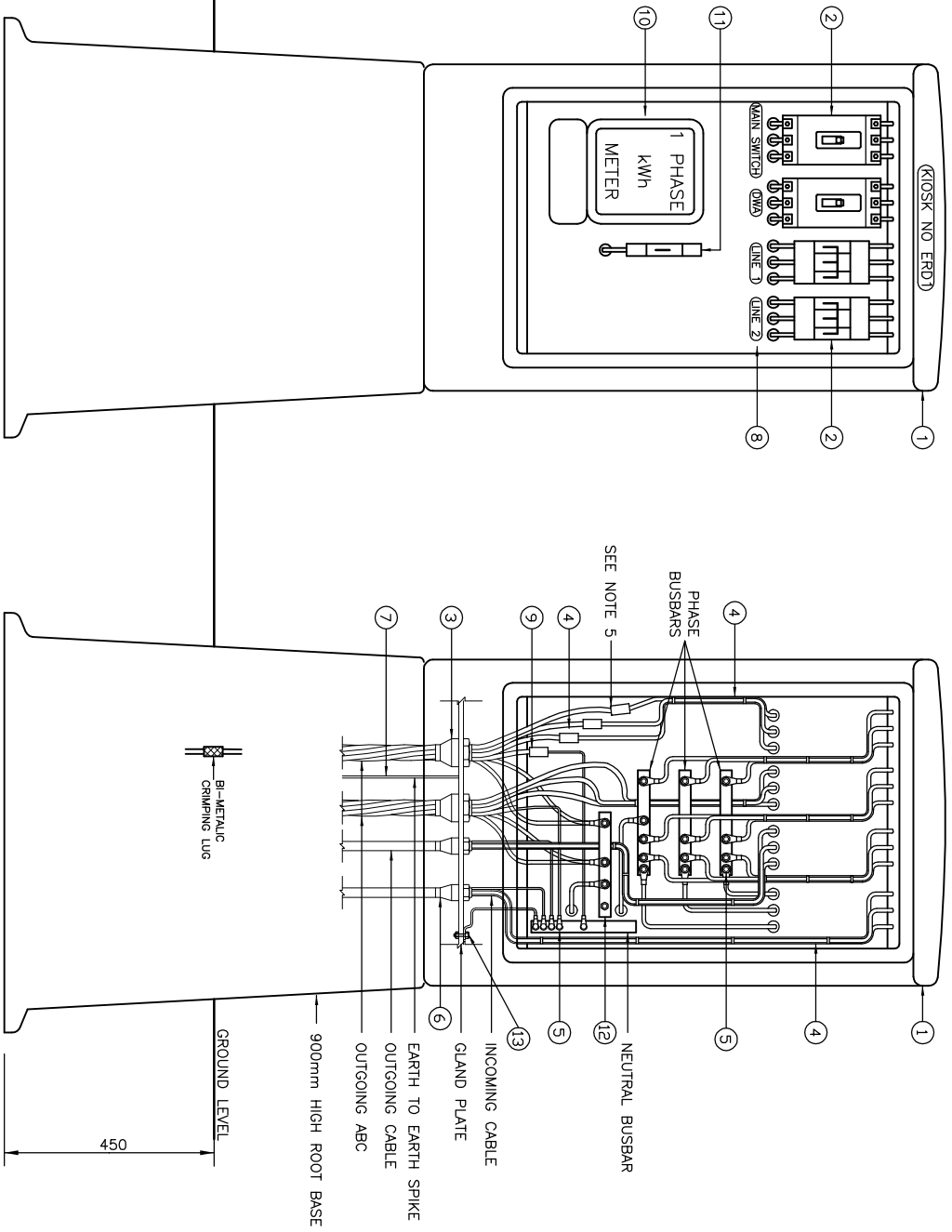


COPYRIGHT © 2000 EMCON  
 ALL RIGHTS RESERVED. NO PART OF THIS PUBLICATION MAY BE REPRODUCED STORED IN A RETRIEVAL SYSTEM OR TRANSMITTED IN ANY FORM OR BY ANY MEANS, ELECTRONIC, MECHANICAL, PHOTOCOPYING, RECORDING OR OTHERWISE, WITHOUT THE PERMISSION IN WRITING FROM EMCON.

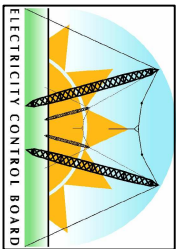


FRONT VIEW OF KIOSK

REAR VIEW OF KIOSK

ITEM	DESCRIPTION	QTY	REMARKS
1	DOUBLE DOOR KIOSK	1	FIRREGASS C/W ROOT BASE AS SPECIFIED
2	CIRCUIT BREAKER	1	FOR ABC
3	BRASS COMPRESSION GLAND	-	SIZE & LENGTHS AS REQD
4	PVC INSULATED CONDUCTORS	-	SIZE & QUANTITY AS REQD
5	TERMINATION LUGS	-	SIZE AS REQD C/W SHROUD
6	CABLE GLANDS	-	BARE Cu CONDUCTOR 70mm <sup>2</sup>
7	KIOSK EARTH CONDUCTOR	17m	WORKING & COLOUR AS REQD
8	LABELS	-	
9	BI-METALLIC TERMINATION LUGS	-	
10	S/PHASE KWH METER	-	
11	S/PHASE 40A 5VA C/B	-	
12	BUSBAR FOR STREET LIGHTING	-	
13	NEUTRAL EARTHING	-	

- NOTES:
- KIOSK TO BE COMPLETE WITH 900mm HIGH ROOT BASE, GLAND PLATE, MOUNTING BOARD, FRAME AND BUSBARS.
  - THE RATING AND QUANTITY OF CIRCUIT BREAKERS TO BE INSTALLED SHALL BE AS INSTRUCTED.
  - CONDUCTOR SIZES USED IN THE KIOSK SHALL COMPLY WITH SABS 0142.
  - ALL BUSBARS SHALL BE SOLID COPPER INSTALLED ONTO INSULATORS AS SPECIFIED FOR KIOSKS.
  - CRIMPING PART OF LUG TO BE INSULATED WITH HEAT SHRINK. HEAT SHRINK ALSO TO COVER THE FIRST 30mm OF THE CONDUCTOR INSULATION.



Box 2923  
 Windhoek  
 NAMIBIA  
 Tel: (061) 374300  
 Fax: (061) 374305

**LOW VOLTAGE DISTRIBUTION  
 TYPICAL DISTRIBUTION KIOSK WITH  
 STRETLIGHTING**

DESIGNED: A.K	DRAWN: J.W.S	REV: 01-2001
DRAWING No: STD-LVABC-20		SCALE: N.T.S

**ELECTRICITY CONTROL BOARD**



ERROR: syntaxerror  
OFFENDING COMMAND: --nostringval--

STACK:

/Title  
( )  
/Subject  
(D:20100127105337+02'00')  
/ModDate  
( )  
/Keywords  
(PDFCreator Version 0.9.5)  
/Creator  
(D:20100127105337+02'00')  
/CreationDate  
(johnny)  
/Author  
-mark-