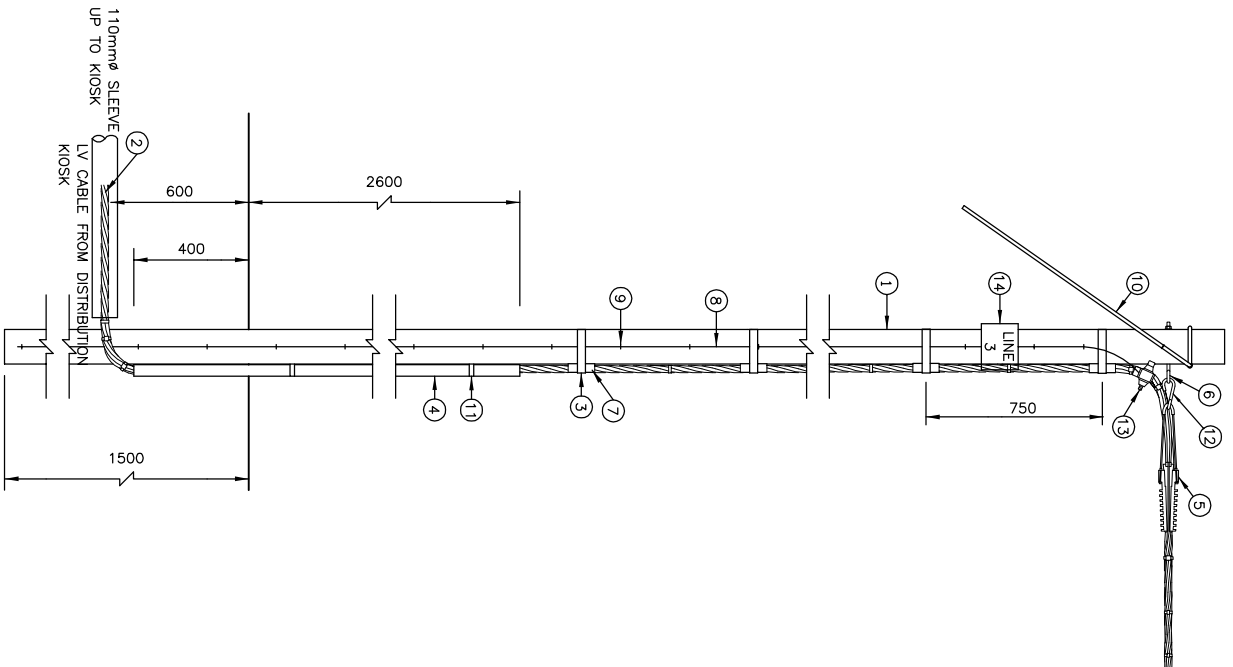


COPYRIGHT © 2009 EMCON  
 ALL RIGHTS RESERVED. NO PART OF THIS PUBLICATION MAY BE REPRODUCED STORED IN A RETRIEVAL SYSTEM OR TRANSMITTED IN ANY FORM OR BY ANY MEANS, ELECTRONIC, MECHANICAL, PHOTOCOPYING, RECORDING OR OTHERWISE, WITHOUT THE PERMISSION IN WRITING FROM EMCON.

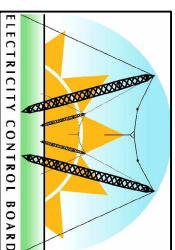


ITEM	DESCRIPTION	QTY	REMARKS
1	WOODEN POLE	1	9m LONG WITH TOP 140mm Ø
2	SUPPLY FROM KIOSK	1	SIZE AS REQUIRED
3	BAND-IT STRAPPING	8	20x0 7mm STAINLESS STEEL
4	KICK PIPE	3m	50mm HOPE
5	STRAIN CLAMP ASSEMBLY	1	FOR ABC SUPPORTING CORE
6	EVERBOLT ASSEMBLY	1	M12 C/W FSHPLTS, WSHRS, NUTS
7	HOPE PIPE (CLASS 6)	0.1m	50mm SLEEVE
8	POLE EARTH CONDUCTOR	9m	3/4.00mm GALV. STEEL WIRE
9	STAPLES	30	3x32mm HOT DIPPED GALVANISED
10	LV POLE STAY ASSEMBLY	1	SEE DWG. STD-LVABC-15
11	GALVANISED SADDLES	5	
12	FUSIBLE LINK	1	TWISTED S-HOOK
13	TAP-OFF CONNECTOR	1	FOR ABC
14	SIGN BOARD	1	SEE DWG. STD-LVABC-26

**NOTES:**

1. IN THE GROUND ABC SHALL BE INSTALLED THROUGH SLEEVES.

**ELECTRICITY CONTROL BOARD**



Box 2923  
 Windhoek  
 NAMIBIA  
 Tel: (061) 374300  
 Fax: (061) 374305

**DRAWING TITLE**

LOW VOLTAGE AERIAL BUNDLED CONDUCTOR  
 DISTRIBUTION: END POLE WITH TAP-IN  
 CONNECTION

<b>DESIGNED:</b> A.K	<b>DRAWN:</b> J.W.S	<b>REV:</b> 01-2001
<b>DRAWING No:</b> STD-LVABC-10		<b>SCALE:</b> N.T.S



ERROR: syntaxerror  
OFFENDING COMMAND: --nostringval--

STACK:

/Title  
( )  
/Subject  
(D:20100127110124+02'00')  
/ModDate  
( )  
/Keywords  
(PDFCreator Version 0.9.5)  
/Creator  
(D:20100127110124+02'00')  
/CreationDate  
(johnny)  
/Author  
-mark-