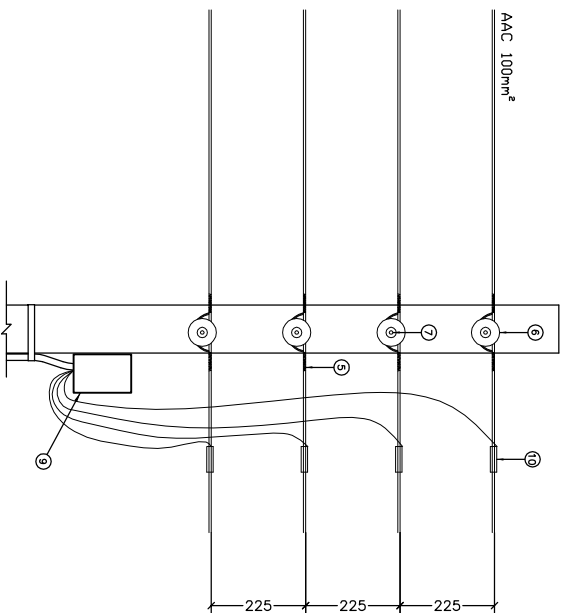
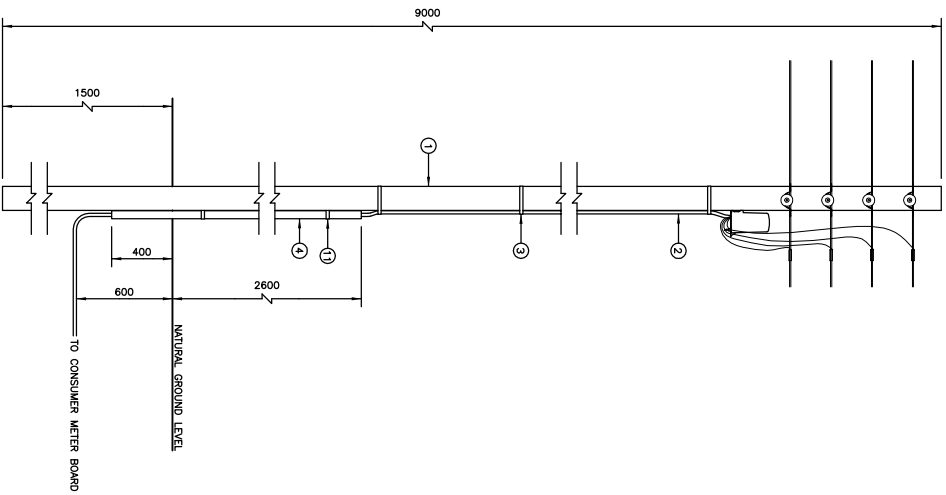


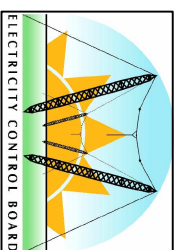
COPYRIGHT © 2009 EMCON
 ALL RIGHTS RESERVED. NO PART OF THIS PUBLICATION MAY BE REPRODUCED OR STORED IN A RETRIEVAL SYSTEM OR TRANSMITTED IN ANY FORM OR BY ANY MEANS, ELECTRONIC, MECHANICAL, PHOTOCOPYING, RECORDING OR OTHERWISE, WITHOUT THE PERMISSION IN WRITING FROM EMCON.



ITEM	DESCRIPTION	QTY	REMARKS
1	WOODEN POLE	1	9m LONG WITH TOP 140mm ϕ min. SIZE AND LENGTH AS REQUIRED
2	SUPPLY CABLE	-	20x0.7mm STAINLESS STEEL
3	BANDIT STRAPPING	8	50mm ϕ HDPE
4	KICK PIPE	3m	
5	SIDE TIE	4	
6	WHITE GLAZED PORCELAIN REEL	4	
7	INSULATOR	4	
8	250mm x 16mm LONG GALV BOLT, WASHERS AND NUT PVC INSULATED CONDUCTORS	8m	SINGLE CORE SIZE AS REQUIRED WITH UV STABILISED HEAT SHRINK SLEEVE
9	POLE-MOUNTED BOX	1	C/W MCB'S, NEUTRAL BAR, WIRE
10	PG CLAMP	4	
11	GALV. SADDLES	4	FOR 50mm ϕ KICK PIPE

NOTES:

ELECTRICITY CONTROL BOARD



Box 2923
 Windhoek
 NAMIBIA
 Tel: (061) 374300
 Fax: (061) 374305

DRAWING TITLE

LOW VOLTAGE BARE OVERHEAD CONDUCTOR
 DISTRIBUTION, THREE PHASE SERVICE
 CONNECTION DETAIL

DESIGNED: A.K DRAWN: J.W.S REV: 01-2001

DRAWING No: STD-LVBOH-13 SCALE: N.T.S

ERROR: syntaxerror
OFFENDING COMMAND: --nostringval--

STACK:

/Title
()
/Subject
(D:20100127094146+02'00')
/ModDate
()
/Keywords
(PDFCreator Version 0.9.5)
/Creator
(D:20100127094146+02'00')
/CreationDate
(johnny)
/Author
-mark-