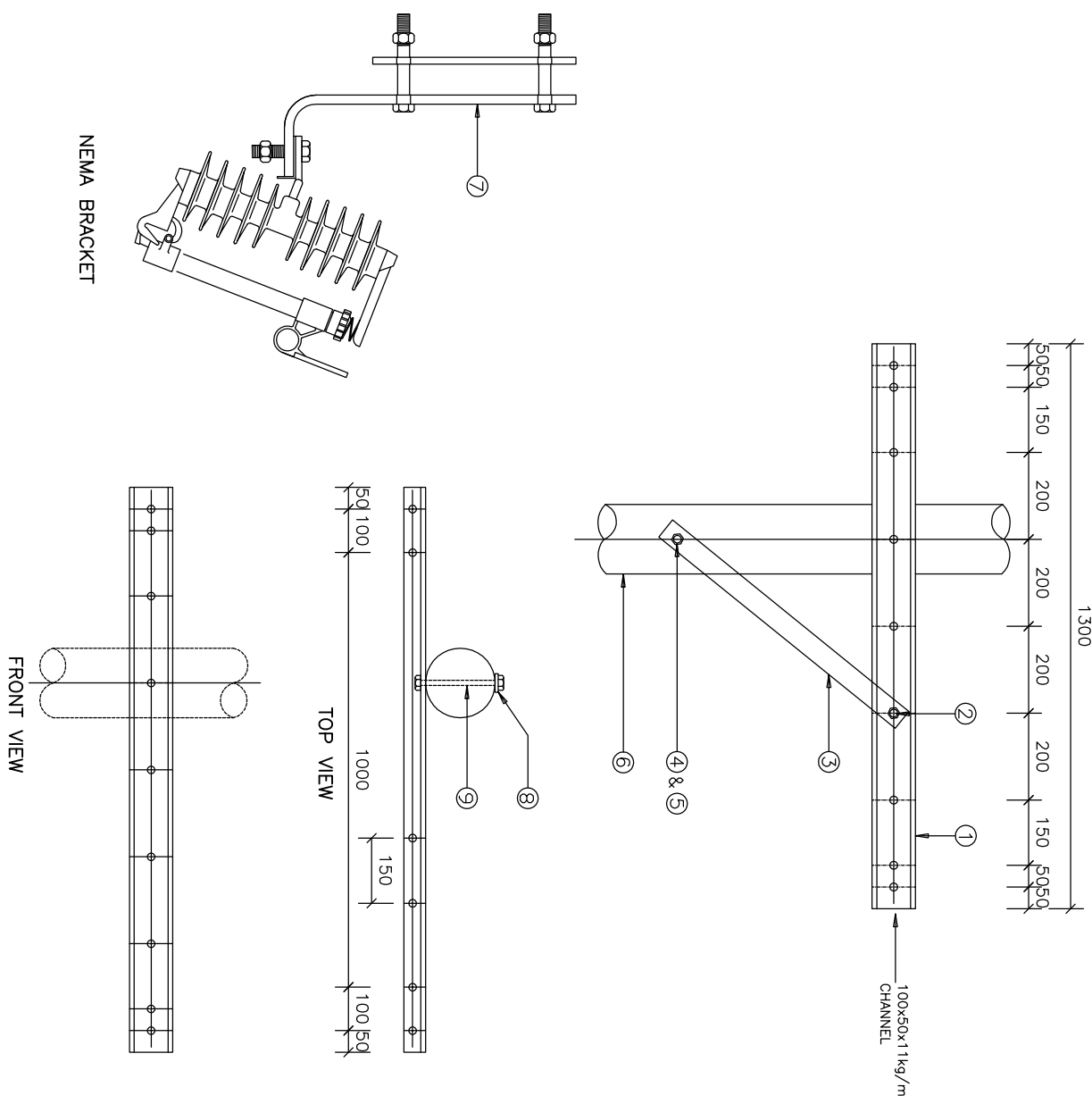


Copyright © 2009 EMCOR
 All rights reserved. No part of this publication may be reproduced, stored in a retrieval system or transmitted in any form or by any means, electronic, electrostatic, magnetic tape, mechanical, photocopying, recording, or otherwise, without the permission in writing from EMCOR.

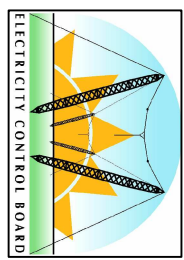


ITEM	DESCRIPTION	QTY	REMARKS
1	GROSS-ARM	1	100x50x1kg/m CHANNEL
2	BOLT & NUT	1	60mm x M20 GALVANISED
3	BRACING STRIP	1	100x50x3mm TMT BARK
4	CORCH SCREW	1	100mm x M10 GALVANISED
5	LOAD WASHER	1	1kg SPECIFIED
6	NEMA BRACKET	6	HS 271-100 "GULLIMAN"
7	CORVED WASHER	1	60x60x6mm GALVANISED
8	BOLT & NUT	1	230mm x M20 GALVANISED

1. ALL MATERIALS SHALL BE GALVANISED MILD STEEL TO SABS 763.
2. INSULATOR MATERIAL AND CREEPAGE TO IEG-60186-60273
3. CREEPAGE 3mm/KV OF R.M.S PHASE-PHASE VOLTAGE

NOTES:

ELECTRICITY CONTROL BOARD



Box 2923
 Windhoek
 NAMIBIA

Tel: (061) 374300
 Fax: (061) 374305

DRAWING TITLE

**MEDIUM VOLTAGE BARE OVERHEAD DISTRIBUTION
 CROSS-ARM DETAIL**

DESIGNED: A.K	DRAWN: J.W.S	REV: 01-2001
DRAWING No: STD-MV/AF-11kV-13	SCALE: N.T.S	

ERROR: syntaxerror
OFFENDING COMMAND: --nostringval--

STACK:

/Title
()
/Subject
(D:20100127123743+02'00')
/ModDate
()
/Keywords
(PDFCreator Version 0.9.5)
/Creator
(D:20100127123743+02'00')
/CreationDate
(johnny)
/Author
-mark-