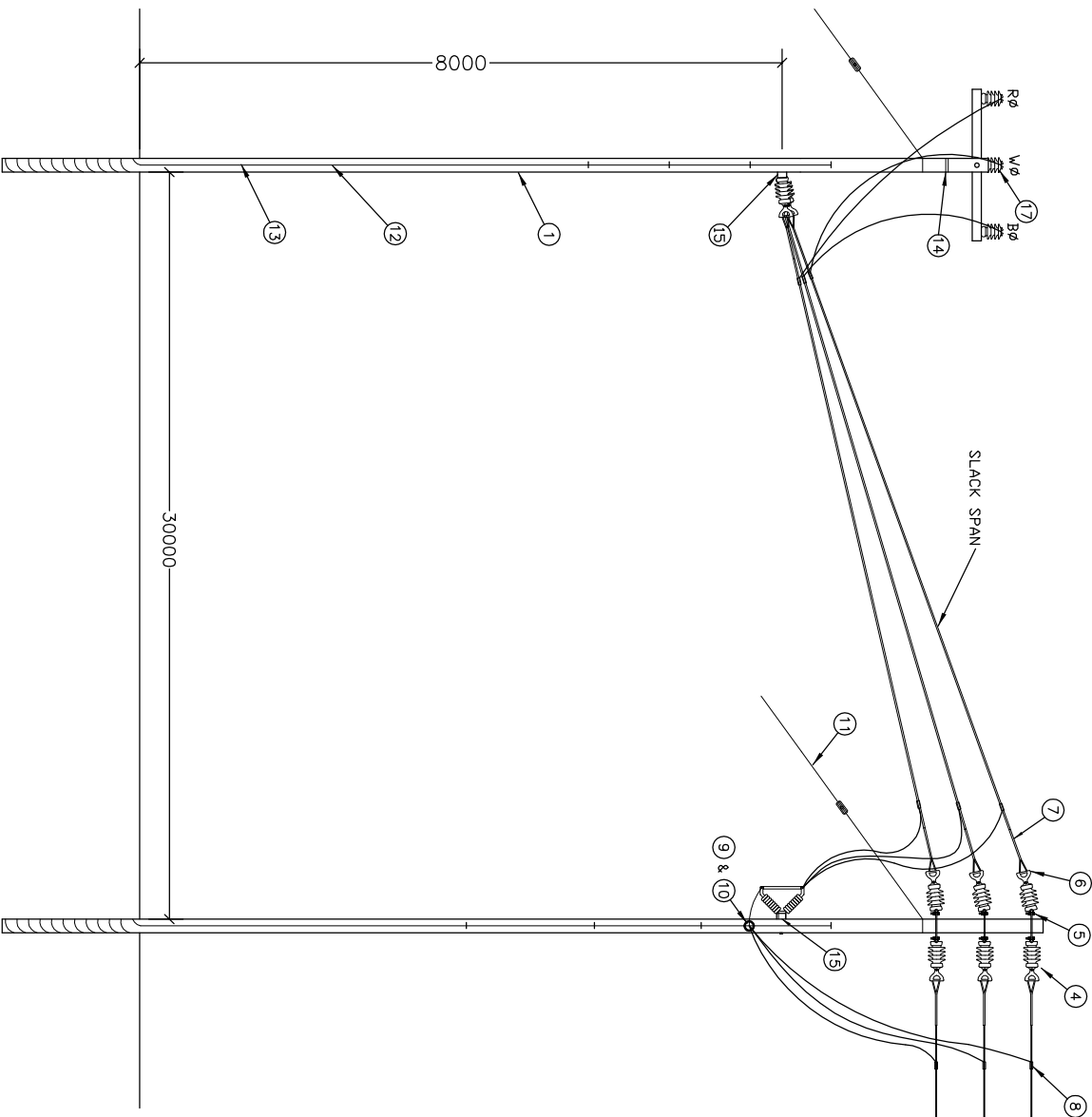


COPYRIGHT © 2009 EMCON  
 ALL RIGHTS RESERVED. NO PART OF THIS PUBLICATION MAY BE REPRODUCED STORED IN A RETRIEVAL SYSTEM OR TRANSMITTED IN ANY FORM OR BY ANY MEANS, ELECTRONIC, MECHANICAL, PHOTOCOPYING, RECORDING OR OTHERWISE, WITHOUT THE PERMISSION IN WRITING FROM EMCON.

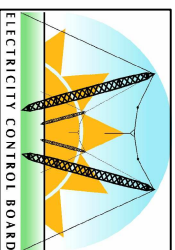


ITEM	DESCRIPTION	QTY	REMARKS
1	WOODEN POLE	2	11m LONG TOP 220mm <sup>2</sup>
4	LONGROD INSULATOR	9	EP 1044, 1200mm CREEPAGE
5	PIN	9	GALVANISED MILD STEEL
6	THIMBLE SOCKET	9	
7	DEAD END	12	
8	PG CLAMP	9	EP 802, 1100mm CREEPAGE
9	LINE POST INSULATOR	1	
10	WRAPLOCK	1	
11	MV STAY ASSEMBLY	1	SEE DWG. NO. STD-WVAF-08
12	POLE EARTH CONDUCTOR	36m	3/4.00mm STAY WIRE
13	STAPLES	80	3x32mm HOT DIP GALVANISED
14	BAND-IT STRAPPING	2	20x0.7mm STAINLESS STEEL
15	CROSS-ARM	2	SEE DWG. NO. STD-WVAF-13
16	DROP-OUT FUSE 33kV	3	C/W FUSES - MCGRAW
17	LINE POST	2	33kV

**NOTES:**

1. ALL JUMPERS SHALL BE GOPHER BARE ALUMINIUM CONDUCTOR.
2. 11m WOODEN POLES SHALL BE USED FOR A T-OFF ACCROSS A ROAD.
3. ALUMINIUM OXIDE GREASE SHALL BE USED ON ALL CLAMPS FOR CORROSION PROTECTION.

**ELECTRICITY CONTROL BOARD**



ELECTRICITY CONTROL BOARD

Box 2923  
 Windhoek  
 NAMIBIA  
 Tel: (061) 374300  
 Fax: (061) 374305

**DRAWING TITLE**

MEDIUM VOLTAGE BARE OVERHEAD  
 DISTRIBUTION T-OFF STRUCTURE FROM  
 CROSSARM  
 -VILLAGE INTERNAL NETWORK-

DESIGNED: A.K      DRAWN: J.W.S      REV: 01-2001

DRAWING No: STD-MVSD-33KV-06      SCALE: N.T.S



ERROR: syntaxerror  
OFFENDING COMMAND: --nostringval--

STACK:

/Title  
( )  
/Subject  
(D:20100127115259+02'00')  
/ModDate  
( )  
/Keywords  
(PDFCreator Version 0.9.5)  
/Creator  
(D:20100127115259+02'00')  
/CreationDate  
(johnny)  
/Author  
-mark-