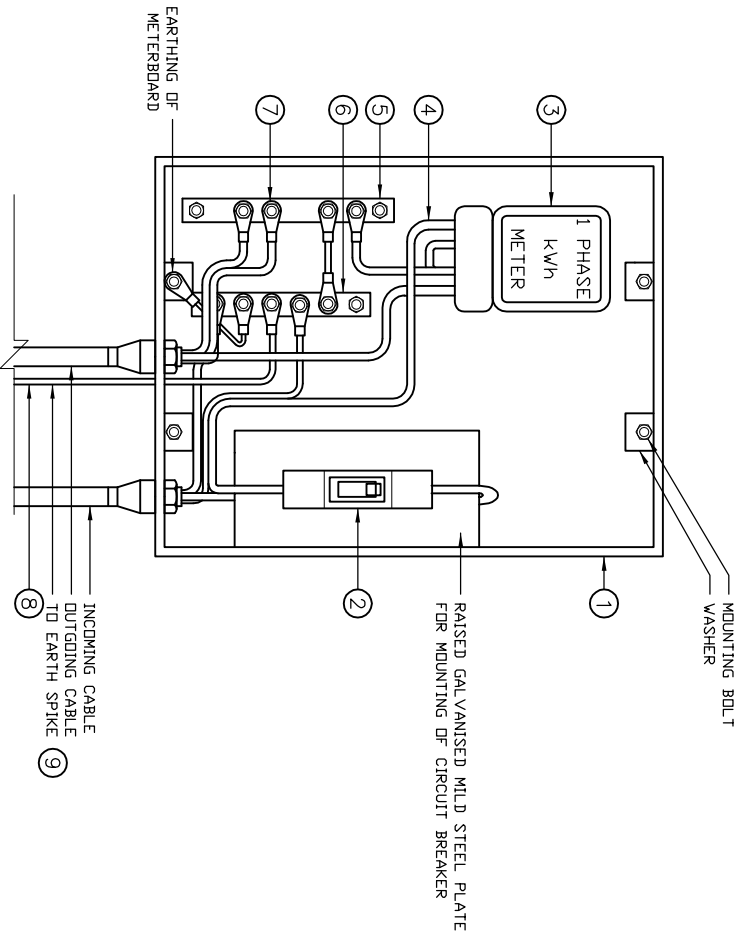


COPYRIGHT © 2009 EMCON  
 ALL RIGHTS RESERVED. NO PART OF THIS PUBLICATION MAY BE REPRODUCED STORED IN A RETRIEVAL SYSTEM OR TRANSMITTED IN ANY FORM OR BY ANY MEANS, INCLUDING ELECTROSTATIC, MAGNETIC TAPE, MECHANICAL, PHOTOCOPYING, RECORDING OR OTHERWISE, WITHOUT THE PERMISSION IN WRITING FROM EMCON.

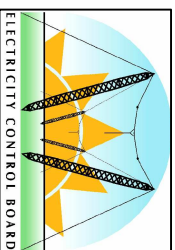


ITEM	DESCRIPTION	QTY	REMARKS
1	METERBOARD	1	SIZE AS REQUIRED C/W SHROUD
2	SINGLE POLE CIRCUIT BREAKER	1	CULLINAN SCHLIMBERGER TYPE
3	SINGLE PHASE kWh METER	1	SIZE AS REQUIRED
4	PVC INSULATED CONDUCTOR	-	SIZE AS REQUIRED
5	NEUTRAL BUSBAR (COPPER)	1	225x25x6mm C/W INSUL. MOUNT.
6	EARTH BUSBAR (COPPER)	1	225x25x6mm C/W INSUL. MOUNT.
7	TERMINATION LUGS	-	SIZE & QUANTITY AS REQUIRED
8	EARTH CONDUCTOR	6m	25mm <sup>2</sup> BARE COPPER
9	EARTH SPIKE	1	1.2m LONG 16mm (NOT SHOWN)
10	LABELS ON COVER	-	WORDING AS REQUIRED

**NOTES:**

1. FOR MOUNTING DETAILS REFER TO DWG NO. STD-LVBOH-24.
2. METERBOARD TO INCLUDE RAISED PLATE, COVER AND HINGED LID. COVER IS NOT SHOWN HERE.
3. THE RATING OF MINATURE CIRCUIT BREAKER (MCB) SHALL BE AS INSTRUCTED.
4. THE CONDUCTOR SIZES USED IN THE METERBOARD SHALL COMPLY WITH BS
5. ALL BUSBARS SHALL BE SOLID COPPER INSTALLED ONTO INSULATORS.

**ELECTRICITY CONTROL BOARD**



Box 2923  
 Windhoek  
 NAMIBIA  
 Tel: (061) 374300  
 Fax: (061) 374305

**DRAWING TITLE**

LOW VOLTAGE DISTRIBUTION:  
 METERBOARD LAYOUT:  
 SINGLE PHASE CONSUMER

<b>DESIGNED:</b> A.K	<b>DRAWN:</b> J.W.S	<b>REV:</b> 01-2001
<b>DRAWING No:</b> STD-LVBOH-23		<b>SCALE:</b> N.T.S



ERROR: syntaxerror  
OFFENDING COMMAND: --nostringval--

STACK:

/Title  
( )  
/Subject  
(D:20100127093112+02'00')  
/ModDate  
( )  
/Keywords  
(PDFCreator Version 0.9.5)  
/Creator  
(D:20100127093112+02'00')  
/CreationDate  
(johnny)  
/Author  
-mark-