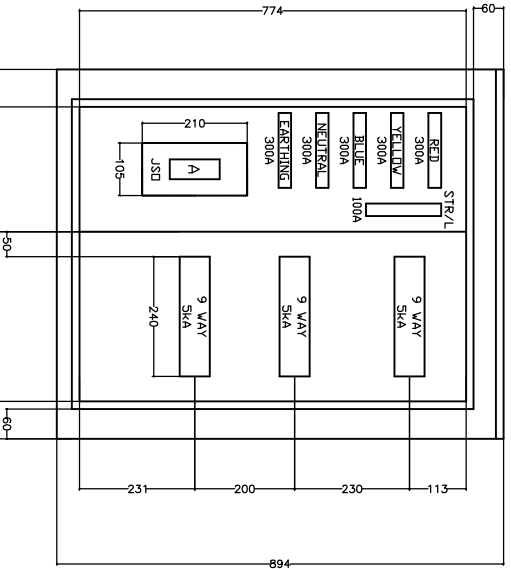
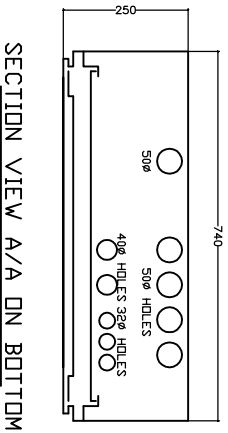
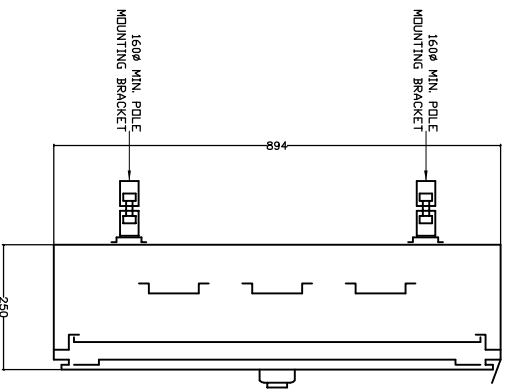


COPYRIGHT © 2009 EMCOR
 ALL RIGHTS RESERVED. NO PART OF THIS PUBLICATION MAY BE REPRODUCED STORED IN A RETRIEVAL SYSTEM OR TRANSMITTED IN ANY FORM OR BY ANY MEANS, ELECTRONIC, MECHANICAL, PHOTOCOPYING, RECORDING OR OTHERWISE, WITHOUT THE PERMISSION IN WRITING FROM EMCOR.

POLE MOUNTING: WEATHER PROOF BOARD



SECTION SIDE VIEW B/B



ITEM

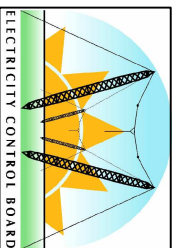
DESCRIPTION

QTY

REMARKS

- NOTES:**
1. PADLOCKABLE DOOR, LEGEND CARD HOLDER.
 2. COLD ROLLED MATERIAL AND GALVANISED.
 3. PREPARED KNOCK-OUTS.

ELECTRICITY CONTROL BOARD



Box 2923
 Windhoek
 NAMIBIA

Tel: (061) 374300
 Fax: (061) 374305

DRAWING TITLE

**LOW VOLTAGE DISTRIBUTION:
 TYPE "A" POLE-MOUNTED
 WEATHERPROOF BOARD – 12 WAY
 EQUIVALENT**

DESIGNED: A.K **DRAWN:** J.W.S **REV:** 01-2001

DRAWING No: STD-LVBOH-20A **SCALE:** N.T.S

ERROR: syntaxerror
OFFENDING COMMAND: --nostringval--

STACK:

/Title
()
/Subject
(D:20100127093633+02'00')
/ModDate
()
/Keywords
(PDFCreator Version 0.9.5)
/Creator
(D:20100127093633+02'00')
/CreationDate
(johnny)
/Author
-mark-